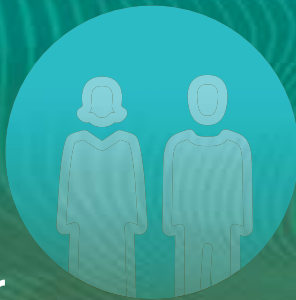


Innovations in Landscape Research Universitas Jember



Lothar Mueller

Frank Eulenstein *Editors*

# Current Trends in Landscape Research

 Springer

## **Innovations in Landscape Research**

### **Series Editor**

Lothar Mueller, Leibniz Centre for Agricultural Landscape Research (ZALF),  
Müncheberg, Brandenburg, Germany



## Contents

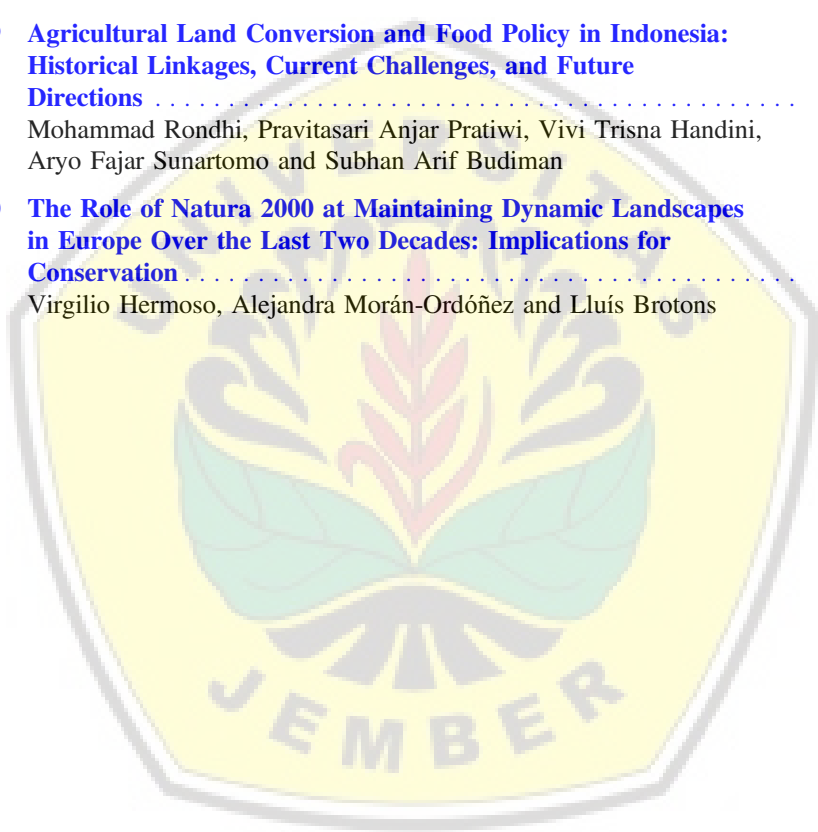
<b>Part I The Essence and Mission of Landscape Research</b>	
<b>1 Territory and/or Scenery: Concepts and Prospects of Western Landscape Research</b> .....	3
Marc Antrop and Veerle Van Eetvelde	
<b>2 Landscape Concept in History of Russian (Soviet) Geography</b> .....	41
Nikolai M. Dronin and John M. Francis	
<b>3 Landscape Ecology Culture and Some Principles of Sustainable Nature Use</b> .....	63
Lev K. Kazakov	
<b>4 Landscape Science for Natural Resource Management in a Globalised World</b> .....	83
Guy M. Robinson	
<b>5 Landscapes, Their Exploration and Utilisation: Status and Trends of Landscape Research</b> .....	105
Lothar Mueller, Frank Eulenstein, Wilfried Mirschel, Marc Antrop, Michael Jones, Blair M. McKenzie, Nikolai M. Dronin, Lev K. Kazakov, Valery V. Kravchenko, Alexander V. Khoroshev, Maria Gerasimova, Ralf Dannowski, Uwe Schindler, Olga Ruhovich, Viktor G. Sychev, Askhad K. Sheudzhen, Denis Couvet, Guy M. Robinson, Winfried Blum, Tomasz Joniak, Ursula Eisendle, Maria Gabriella Trovato, Elmira Salnjikov, Michael Haubold-Rosar, Dirk Knoche, Michael Köhl, Debbie Bartlett, Jörg Hoffmann, Jörg Römbke, Frank Glante, Olga I. Sumina, Abdulla Saparov, Elena Bukvareva, Vitaly V. Terleev, Alex G. Topaj and Felix Kienast	

## Part II Concepts for Landscape Assessment and Evolvment

<b>6</b>	<b>Concepts and Measures for Maintaining Wilderness and Landscape Biodiversity in the Anthropocene</b> .....	167
	Vladimir Bocharnikov	
<b>7</b>	<b>Towards an Interdisciplinary Understanding of Landscape Qualities: Wilderness, Tranquillity and Dark Skies</b> .....	191
	Flurina M. Wartmann, William A. Mackaness, Nicole Bauer, Janine Bolliger and Felix Kienast	
<b>8</b>	<b>Tools for Landscape Science: Theory, Models and Data</b> .....	221
	Marcel van Oijen	
<b>9</b>	<b>Analyzing Vegetation–Soil–Topography Relationships of Landscapes: A Multiscale Geosystem Approach and Its Application</b> .....	233
	Alexander V. Khoroshev	
<b>10</b>	<b>Ecosystem Services of Russian Landscapes</b> .....	253
	Elena Bukvareva, Dmitry Zamolodchikov and Karsten Grunewald	
<b>11</b>	<b>Citizen and Landscape Governance</b> .....	287
	Denis Couvet	
<b>12</b>	<b>Learning Landscape Approach Through Evaluation: Opportunities for Pan-European Long-Term Socio-Ecological Research</b> .....	303
	Per Angelstam, Michael Manton, Fatima Cruz, Mariia Fedoriak and Yuriy Pautov	
<b>13</b>	<b>Regenerative Landscape Development: A Transformational Methodology for Thrivability of Landscapes</b> .....	321
	Leah V. Gibbons	
<b>14</b>	<b>The iCASS Platform: Nine Principles for Landscape Conservation Design</b> .....	339
	Robert M. Campellone, Kristina M. Chouinard, Nicholas A. Fisichelli, John A. Gallo, Joseph R. Lujan, Ronald J. McCormick, Thomas A. Miewald, Brent A. Murry, D. John Pierce and Daniel R. Shively	
<b>15</b>	<b>Long-Term Experiences with the Action “Soil of the Year” in Germany</b> .....	367
	Monika Frielinghaus and Gerhard Milbert	

<b>16</b>	<b>A Framework to Connect Biodiversity-Ecosystem Functioning Research to Habitat Fragmentation</b> .....	<b>381</b>
	Jiajia Liu, Lionel Hertzog, Guang Hu, Kris Verheyen and Mingjian Yu	
<b>17</b>	<b>Basic Principles of Sustainable Land Use Management</b> .....	<b>395</b>
	Zita Izakovičová, László Miklós and Jana Špulerová	
<b>Part III Tools for Landscape Planning</b>		
<b>18</b>	<b>Impacts on Landscapes, Biodiversity and the Environment: Methods of Assessment and Compensation</b> .....	<b>427</b>
	Valery V. Kravchenko	
<b>19</b>	<b>Assessing the Ecological Status in Regions of Russia and Neighbouring Countries</b> .....	<b>455</b>
	Viktoria R. Bitjukova	
<b>20</b>	<b>Planning Tools for the Protection of the Natural and Cultural Heritage in the Eastern Mediterranean Area</b> .....	<b>467</b>
	Maria Gabriella Trovato and Dana Ali	
<b>21</b>	<b>Assessment and Management of Suburbanization Pressure on Landscape in the Munich Region</b> .....	<b>487</b>
	Johannes Gnaedinger, Cristina Mattos, Tanja Fugiel and Joerg Schaller	
<b>22</b>	<b>Gradient Analysis and Surface Metrics for Landscape Ecology</b> ...	<b>497</b>
	Peter J. Kedron and Amy E. Frazier	
<b>Part IV Landscape Characterization: International Case Studies</b>		
<b>23</b>	<b>Landscape Character and Ecosystem Services Assessment: A Case Study from India</b> .....	<b>521</b>
	Debbie Bartlett and Sarah Milliken	
<b>24</b>	<b>Landscape-Ecological Conditions and Conflicts of Environmental Management in the Arctic Zone of Russia</b> .....	<b>545</b>
	Alexander Evseev and Tatiana Krasovskaya	
<b>25</b>	<b>Vegetation Monitoring on Quarries in the Russian Far North as a Basis for Creating Models and Analyzing Trends of Landscape Processes</b> .....	<b>559</b>
	Olga I. Sumina and Elena M. Koptseva	
<b>26</b>	<b>The Eddy-Covariance Method and Its Application from the Volga Steppe Region to Eastern Siberia</b> .....	<b>579</b>
	Thomas Foken, Mikhail Strunin and Mathias Göckede	

<b>27 In Situ and Remote Water Monitoring in Central Asia—The Central Asian Water (CAWa) Network</b> .....	599
Tilo Schöne, Alexander Zubovich, Cornelia Zech, Julia Illigner, Azamat Sharshebaev, Dmitry Mandychev, Abdysamat Shakirov, Nico Stolarczuk, Mahmud H. Haghighi, Lars Gerlitz, Abror Gafurov, Bolot Moldobekov and Jörn Lauterjung	
<b>28 Peatland Science and Conservation: Contributions of the Greifswald Mire Centre, Germany</b> .....	611
Greta Gaudig and Franziska Tanneberger	
<b>29 Agricultural Land Conversion and Food Policy in Indonesia: Historical Linkages, Current Challenges, and Future Directions</b> .....	631
Mohammad Rondhi, Pravitasari Anjar Pratiwi, Vivi Trisna Handini, Aryo Fajar Sunartomo and Subhan Arif Budiman	
<b>30 The Role of Natura 2000 at Maintaining Dynamic Landscapes in Europe Over the Last Two Decades: Implications for Conservation</b> .....	665
Virgilio Hermoso, Alejandra Morán-Ordóñez and Lluís Brotons	



## Editors and Contributors

### About the Editors



**Lothar Mueller** is a retired scientist from the Leibniz Centre for Agricultural Landscape Research (ZALF) in Muencheberg, Germany.

Lothar Mueller studied Agriculture at the Humboldt University in Berlin and graduated from the Academy of Agricultural Science of the GDR (Dr. agr.) in 1974. He has worked at the Research Centre of Soil Fertility (1974–1991), and the ZALF Institutes of Soil Landscape Research and Landscape Hydrology (1991–2014).

His strongest background is in soil science and agriculture. Jointly with an international team he developed the Muencheberg Soil Quality Rating, an acknowledged approach for assessing the quality of global soils for cropping and grazing. Over the past 5 years his scientific interest and international network was broadened on the field of landscape monitoring and management.

Lothar Mueller has published more than 350 papers, amongst them more than 100 peer-reviewed publications and book chapters. Since 2013 he has been an Honorary Professor at the State Agricultural University of the Kuban in Krasnodar (Russian Federation). He was appointed as an Honorary Doctor of the Russian Research Institute of Rice in Krasnodar, of the Pryanishnikov Institute for Agrochemistry in Moscow and of the Institute for Soil Science and Agrochemistry in Almaty, Kazakhstan.



**Frank Eulenstein** is a scientist at the Leibniz Centre for Agricultural Landscape Research (ZALF) in Muencheberg, Germany. He studied Agriculture at the Georg August University of Göttingen and graduated there at the Institute for Soil Science in 1992 (Dr. sc. agr.).

Since 1993 he has worked as scientist at the ZALF Institute of Land Use Systems. His fields of interest are water, matter and energy fluxes in agricultural systems and the practical questions of cropping and fertilisation. Currently, he works in the Research Area “Land Use and Governance”, workgroup “Sustainable Grassland Systems” of ZALF.

Frank Eulenstein has published more than 300 scientific papers. He has more than 20 years experience as a manager (CEO) in the segments of the development of organic fertilizers and classical agricultural trade.

Since 2013 he has been an Honorary Professor at the State Agricultural University of the Kuban in Krasnodar (Russian Federation). He was appointed as an Honorary Doctor of the Russian Research Institute of Rice in Krasnodar and of the Institute for Soil Science and Agrochemistry in Almaty, Kazakhstan.

## Contributors

**Dana Ali** Department of Landscape Design and Ecosystem Management, Faculty of Agricultural and Food Sciences, American University of Beirut, Beirut, Lebanon

**Per Angelstam** School for Forest Management, Faculty of Forest Sciences, Swedish University of Agricultural Sciences (SLU), Skinnskatteberg, Sweden

**Marc Antrop** Landscape Research—Department of Geography, Ghent University, Ghent, Belgium

**Debbie Bartlett** Faculty of Engineering and Science, University of Greenwich, Gillingham, Kent, UK

**Nicole Bauer** Swiss Federal Research Institute for Forest, Snow and Landscape WSL, Birmensdorf, Switzerland

**Viktoria R. Bitjukova** Faculty of Geography, Department of Economic and Social Geography of Russia, Lomonosov Moscow State University, Leninskie Gory, Moscow, Russia

**Winfried Blum** Institute of Soil Research, University of Natural Resources and Life Sciences, Vienna, Austria



**Vladimir Bocharnikov** Far-Eastern Branch, Pacific Geographical Institute, Russian Academy of Sciences, Vladivostok, Russia

**Janine Bolliger** Swiss Federal Research Institute for Forest, Snow and Landscape WSL, Birmensdorf, Switzerland

**Lluís Brotons** Centre Tecnològic Forestal de Catalunya (CEMFOR-CTFC), Solsona, Spain;  
CREAF, Cerdanyola del Vallés, Spain;  
CSIC, Cerdanyola del Vallés, Spain

**Subhan Arif Budiman** Department of Soil Science, University of Jember, Jember, Indonesia

**Elena Bukvareva** Biodiversity Conservation Center, Moscow, Russia

**Robert M. Campellone** National Wildlife Refuge System, U.S. Fish and Wildlife Service, Falls Church, VA, USA

**Kristina M. Chouinard** Migratory Bird Program/National Wildlife Refuge System, U.S. Fish and Wildlife Service, Jackson, TN, USA

**Denis Couvet** UMR MNHN-CNRS-SU 'CESCO', Paris, France

**Fatima Cruz** Sustainable Forest Management Research Institute, University of Valladolid, Palencia, Spain

**Ralf Dannowski** Leibniz Centre for Agricultural Landscape Research (ZALF), Muencheberg, Germany

**Nikolai M. Dronin** Faculty of Geography, Lomonosov Moscow State University, Moscow, Russia

**Veerle Van Eetvelde** Landscape Research—Department of Geography, Ghent University, Ghent, Belgium

**Ursula Eisendle** University of Salzburg, Salzburg, Austria

**Frank Eulenstein** Leibniz Centre for Agricultural Landscape Research (ZALF), Muencheberg, Germany;  
Kuban State Agrarian University, Krasnodar, Russia;  
Mitscherlich Academy for Soil Fertility, Paulinenaue, Germany

**Alexander Evseev** Faculty of Geography, Lomonosov Moscow State University, Moscow, Russia

**Mariia Fedoriak** Department of Ecology and Biomonitoring, Chernivtsi National University, Chernivtsi, Ukraine

**Nicholas A. Fisichelli** Climate Change Response Program, National Park Service, Fort Collins, CO, USA;  
Schoodic Institute at Acadia National Park, Winter Harbor, ME, USA

**Thomas Foken** Bayreuth Center of Ecology and Environmental Research (BayCEER), University of Bayreuth, Bayreuth, Germany

**John M. Francis** JMF Research Associates, Philadelphia, USA

**Amy E. Frazier** School of Geographical Sciences and Urban Planning, Arizona State University, Tempe, AZ, USA

**Monika Frielinghaus** Kuratorium Boden des Jahres, Geldern, Germany

**Tanja Fugiel** Prof. Schaller UmweltConsult GmbH, Munich, Germany

**Abror Gafurov** Helmholtz-Zentrum Potsdam Deutsches GeoForschungsZentrum GFZ, Telegrafenberg, Potsdam, Germany

**John A. Gallo** Conservation Biology Institute, Corvallis, OR, USA

**Greta Gaudig** Institute of Botany and Landscape Ecology, Greifswald University, Partner in the Greifswald Mire Centre, Greifswald, Germany

**Maria Gerasimova** Faculty of Geography, Lomonosov Moscow State University, Moscow, Russia;  
V.V. Dokuchaev Soil Science Institute, Moscow, Russia

**Lars Gerlitz** Helmholtz-Zentrum Potsdam Deutsches GeoForschungsZentrum GFZ, Telegrafenberg, Potsdam, Germany

**Leah V. Gibbons** School of Sustainability, Arizona State University, Tempe, AZ, USA

**Frank Glante** German Environment Agency, Dessau-Rosslau, Germany

**Johannes Gnaedinger** Prof. Schaller UmweltConsult GmbH, Munich, Germany

**Mathias Göckede** Max-Planck-Institute for Biogeochemistry, Jena, Germany

**Karsten Grunewald** Leibniz Institute of Ecological Urban and Regional Development, Dresden, Germany

**Mahmud H. Haghighi** Helmholtz-Zentrum Potsdam Deutsches GeoForschungsZentrum GFZ, Telegrafenberg, Potsdam, Germany

**Vivi Trisna Handini** Department of Agribusiness, University of Jember, Jember, Indonesia

**Michael Haubold-Rosar** Research Institute for Post-Mining Landscapes (FIB), Finsterwalde, Germany

**Virgilio Hermoso** Centre Tecnològic Forestal de Catalunya (CEMFOR-CTFC), Solsona, Spain;  
CREAF, Cerdanyola del Vallés, Spain

**Lionel Hertzog** Forest and Nature Lab, Ghent University, Melle-Gontrode, Belgium

**Jörg Hoffmann** Julius Kühn-Institut (JKI) Bundesforschungsinstitut Für Kulturpflanzen, Institut Für Strategien Und Folgenabschätzung, Nachhaltige Landwirtschaft Und Biodiversität, Kleinmachnow, Germany

**Guang Hu** School of Civil Engineering and Architecture, Zhejiang Sci-Tech University, Hangzhou, China

**Julia Illigner** Helmholtz-Zentrum Potsdam Deutsches GeoForschungsZentrum GFZ, Telegrafenberg, Potsdam, Germany

**Zita Izakovičová** Institute of Landscape Ecology, Slovak Academy of Sciences, Bratislava, Slovakia

**D. John Pierce** Washington Department of Fish and Wildlife, Wildlife Program, Olympia, WA, USA

**Michael Jones** Department of Geography, Norwegian University of Science and Technology, Trondheim, Norway

**Tomasz Joniak** Department of Water Protection, Faculty of Biology, Institute of Environmental Biology, Adam Mickiewicz University Poznań, Poznań, Poland

**Lev K. Kazakov** Faculty of Geography, Lomonosov Moscow State University, Moscow, Russia

**Peter J. Kedron** School of Geographical Sciences and Urban Planning, Arizona State University, Tempe, AZ, USA

**Alexander V. Khoroshev** Faculty of Geography, Lomonosov Moscow State University, Moscow, Russia

**Felix Kienast** Swiss Federal Institute for Forest, Snow and Landscape Research WSL, Birmensdorf, Switzerland

**Dirk Knoche** Research Institute for Post-Mining Landscapes (FIB), Finsterwalde, Germany

**Michael Köhl** Universität Hamburg, Center for Earth System Research and Sustainability World Forestry, Hamburg, Germany

**Elena M. Koptseva** Department of Geobotany and Plant Ecology, Faculty of Biology, St. Petersburg State University, St. Petersburg, Russia

**Tatiana Krasovskaya** Faculty of Geography, Lomonosov Moscow State University, Moscow, Russia

**Valery V. Kravchenko** V.B. Sochava Institute of Geography of the SB RAS, Irkutsk, Russia

**Jörn Lauterjung** Helmholtz-Zentrum Potsdam Deutsches GeoForschungs Zentrum GFZ, Telegrafenberg, Potsdam, Germany;  
Central Asian Institute for Applied Geosciences (CAIAG), Bishkek, Kyrgyzstan

**Jiajia Liu** Forest and Nature Lab, Ghent University, Melle-Gontrode, Belgium;  
College of Life Sciences, Zhejiang University, Hangzhou, Zhejiang, China

**Joseph R. Lujan** U.S. Fish and Wildlife Service, National Wildlife Refuge  
System, Albuquerque, NM, USA

**William A. Mackaness** School of Geosciences, Edinburgh, UK

**Dmitry Mandych** Central Asian Institute for Applied Geosciences (CAIAG),  
Bishkek, Kyrgyzstan

**Michael Manton** Faculty of Forest Science and Ecology, Vytautas Magnus  
University, Akademija, Kaunas, Lithuania

**Cristina Mattos** Esri Deutschland Group GmbH, Kranzberg, Germany

**Ronald J. McCormick** Environmental Quality and Protection, Bureau of Land  
Management, Washington, DC, USA

**Blair M. McKenzie** The James Hutton Institute, Dundee, UK

**Thomas A. Miewald** U.S. Fish and Wildlife Service, North Pacific Landscape  
Conservation Cooperative/National Wildlife Refuge System, Portland, OR, USA

**László Miklós** Institute of Landscape Ecology, Slovak Academy of Sciences,  
Bratislava, Slovakia

**Gerhard Milbert** Kuratorium Boden des Jahres, Geldern, Germany

**Sarah Milliken** Department of Landscape, School of Design, University of  
Greenwich, Gillingham, UK

**Wilfried Mirschel** Leibniz Centre for Agricultural Landscape Research (ZALF),  
Muencheberg, Germany

**Bolot Moldobekov** Central Asian Institute for Applied Geosciences (CAIAG),  
Bishkek, Kyrgyzstan

**Alejandra Morán-Ordóñez** Centre Tecnològic Forestal de Catalunya  
(CEMFOR-CTFC), Solsona, Spain;  
CREAF, Cerdanyola del Vallés, Spain

**Lothar Mueller** Leibniz Centre for Agricultural Landscape Research (ZALF),  
Muencheberg, Germany;  
Kuban State Agrarian University, Krasnodar, Russia

**Brent A. Murry** U.S. Fish and Wildlife Service, Caribbean Landscape  
Conservation Cooperative, San Juan, PR, USA

**Yurij Pautov** Silver Taiga Foundation for Sustainable Development, Syktyvkar,  
Russia

**Pravitasari Anjar Pratiwi** Department of Agribusiness, University of Jember,  
Jember, Indonesia

**Guy M. Robinson** Department of Geography, School of Social Sciences, University of Adelaide, Adelaide, SA, Australia;  
Department of Land Economy, University of Cambridge, Cambridge, UK

**Jörg Römcke** ECT Oekotoxikologie GmbH, Flörsheim, Germany

**Mohammad Rondhi** Department of Agribusiness, University of Jember, Jember, Indonesia

**Olga Ruhovich** Pryanishnikov-Institute for Agrochemistry, Moscow, Russia

**Elmira Salnjikov** Soil Science Institute, Belgrade, Serbia

**Abdulla Saparov** Kazakh Research Institute of Soil Science and Agrochemistry Named After U. U. Uspanov, Almaty, Kazakhstan;  
Research Centre for Ecology and Environment of Central Asia (Almaty), Almaty, Kazakhstan

**Joerg Schaller** Prof. Schaller UmweltConsult GmbH, Munich, Germany;  
Esri Deutschland Group GmbH, Kranzberg, Germany

**Uwe Schindler** Kuban State Agrarian University, Krasnodar, Russia;  
Mitscherlich Academy for Soil Fertility, Paulinenaue, Germany

**Tilo Schöne** Helmholtz-Zentrum Potsdam Deutsches GeoForschungsZentrum GFZ, Telegrafenberg, Potsdam, Germany

**Abdysamat Shakirov** Central Asian Institute for Applied Geosciences (CAIAG), Bishkek, Kyrgyzstan

**Azamat Sharshebaev** Central Asian Institute for Applied Geosciences (CAIAG), Bishkek, Kyrgyzstan

**Askhad K. Sheudzhen** Kuban State Agrarian University, Krasnodar, Russia

**Daniel R. Shively** Watershed, Fish, Wildlife, Air & Rare Plants Program, U.S. Forest Service, Washington, DC, USA

**Jana Špulerová** Institute of Landscape Ecology, Slovak Academy of Sciences, Bratislava, Slovakia

**Nico Stolarczuk** Helmholtz-Zentrum Potsdam Deutsches GeoForschungsZentrum GFZ, Telegrafenberg, Potsdam, Germany

**Mikhail Strunin** Federal State Budgetary Institute “Central Aerological Observatory” of ROSHYDROMET (FSBI “CAO”), Dolgoprudny, Moscow Region, Russia

**Olga I. Sumina** Department of Geobotany and Plant Ecology, Faculty of Biology, St. Petersburg State University, St. Petersburg, Russia

**Aryo Fajar Sunartomo** Department of Agricultural Extension, University of Jember, Jember, Indonesia

**Viktor G. Sychev** Pryanishnikov-Institute for Agrochemistry, Moscow, Russia

**Franziska Tanneberger** Institute of Botany and Landscape Ecology, Greifswald University, Partner in the Greifswald Mire Centre, Greifswald, Germany

**Vitaly V. Terleev** Peter the Great Saint-Petersburg Polytechnic University, St. Petersburg, Russia

**Alex G. Topaj** Agrophysical Research Institute, St. Petersburg, Russia

**Maria Gabriella Trovato** Department of Landscape Design and Ecosystem Management, Faculty of Agricultural and Food Sciences, American University of Beirut, Beirut, Lebanon

**Marcel van Oijen** Centre for Ecology & Hydrology, Penicuik, UK

**Kris Verheyen** Forest and Nature Lab, Ghent University, Melle-Gontrode, Belgium

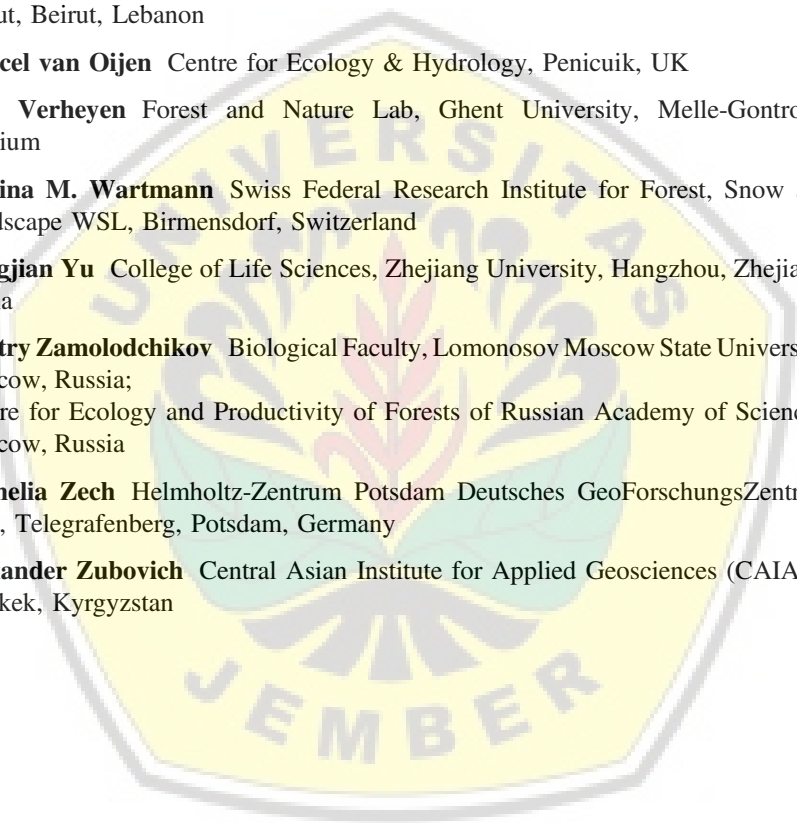
**Flurina M. Wartmann** Swiss Federal Research Institute for Forest, Snow and Landscape WSL, Birmensdorf, Switzerland

**Mingjian Yu** College of Life Sciences, Zhejiang University, Hangzhou, Zhejiang, China

**Dmitry Zamolodchikov** Biological Faculty, Lomonosov Moscow State University, Moscow, Russia;  
Centre for Ecology and Productivity of Forests of Russian Academy of Sciences, Moscow, Russia

**Cornelia Zech** Helmholtz-Zentrum Potsdam Deutsches GeoForschungsZentrum GFZ, Telegrafenberg, Potsdam, Germany

**Alexander Zubovich** Central Asian Institute for Applied Geosciences (CAIAG), Bishkek, Kyrgyzstan



## Chapter 29

# Agricultural Land Conversion and Food Policy in Indonesia: Historical Linkages, Current Challenges, and Future Directions



Mohammad Rondhi, Pravitasari Anjar Pratiwi, Vivi Trisna Handini,  
Aryo Fajar Sunartomo and Subhan Arif Budiman

**Abstract** The problem of agricultural land conversion (ALC) is inseparable to the food security issue in Indonesia. The government has set ALC as the primary threat to the existence of food security. The monoculture food policy in Indonesia has developed an unbalanced food system which relies heavily on rice and shaped the rice-eating habit among Indonesians. The government has formed an act about sustainable agricultural land (LP2B) to protect productive agricultural land and to mitigate the risk of decreasing rice production. The government also encourages the diversification of food to lessen the dependence on rice. However, it is difficult to implement both policies. The formation of LP2B will promote the conflict of interests between stakeholders involved (farmers, real estate developer, and commercial business). On the other hand, food diversification will not be sufficient unless followed by massive effort to stimulate the establishment of supporting institutions (the market for the agricultural product, processing industries, and the market for the consumer). Thus, it is required to limit the rate of ALC with a different and innovative approach. In this chapter, we explain how increasing agricultural land rent encourages farmers to retain farmland. Furthermore, we also identify what significant factors that affect the rent of agricultural land.

---

M. Rondhi (✉) · P. A. Pratiwi · V. T. Handini  
Department of Agribusiness, University of Jember, Jember 68121, Indonesia  
e-mail: [rondhi.faperta@unej.ac.id](mailto:rondhi.faperta@unej.ac.id)

P. A. Pratiwi  
e-mail: [pravita.anjar@unej.ac.id](mailto:pravita.anjar@unej.ac.id)

V. T. Handini  
e-mail: [vivi.trisna@unej.ac.id](mailto:vivi.trisna@unej.ac.id)

A. F. Sunartomo  
Department of Agricultural Extension, University of Jember, Jember 68121, Indonesia  
e-mail: [aryo.faperta@unej.ac.id](mailto:aryo.faperta@unej.ac.id)

S. A. Budiman  
Department of Soil Science, University of Jember, Jember 68121, Indonesia  
e-mail: [sabudiman@unej.ac.id](mailto:sabudiman@unej.ac.id)



these pages are intentionally blank due to copy right reason





- region. The focused study location should be in the peri-urban area and the area where new urban core has emerged. This location experienced the highest rate of ALC.
2. It is vital to identify the characteristics of peri-urban farmer systematically. Peri-urban farmer potentially has the vital role in limiting the ALC in the peri-urban area since their motive of farming is entirely different from the typical farmer in which they tend to retain their farming even at the expense of profit. Targeting the compensation scheme contained in UU NO. 41 Tahun 2009 to these farmers will improve their motivation in farming and will encourage them to retain the land.
  3. It is also essential to mitigate the risk of pesticide overuse by a commercial farmer in rural areas. The high level of pesticide is applied to horticulture farming in the rural area. Although horticulture farming increases agricultural land rent and limits the ALC, the pesticide overuse will degrade environmental quality in the long term.
  4. Research into the development and evolution of cultural landscapes in a peri-urban and rural area will provide extensive insight into how the landscapes evolved as the consequence of urbanization.

## References

- Agus F, Irawan (2006) Agricultural land conversion as a threat to food security and environmental quality. *J Litbang Pertan* 25(3):90–98
- Allen A (2003) Environmental planning and management of the peri-urban interface: perspectives on an emerging field. *Environ Urban* 15(1):135–148
- Ariani M (2004) Dinamika Konsumsi Beras Rumah Tangga dan Kaitannya dengan Diversifikasi Konsumsi Pangan. In: Kasryono F, Pasandaran E, Fagi AM (eds) *Ekon. Padi dan Beras di Indones*. (Badan Penelitian dan Pengembangan Pertanian, Bogor), 541–558
- Azadi H, Ho P, Hasfiati L (2011) Agricultural land conversion drivers: a comparison between less developed, developing and developed countries. *L Degrad Dev* 22(6):596–604
- Bhatta B (2010) *Analysis of urban growth and sprawl from remote sensing data*. Springer, Berlin
- BPS-Statistics of Jember Regency (2017) *Jember Regency in Figures*. BPS Kabupaten Jember, Jember
- Brown K, Barrows R (1985) The impact of soil conservation investments on land prices. *Am J Agric Econ* 67:943–947
- Bryld E (2003) Potentials, problems, and policy implications for urban agriculture in developing countries. *Agric Hum Values* 20:79–86
- Chen Z, Wang Q, Chen Y, Huang X (2015) Is illegal farmland conversion ineffective in China? Study on the impact of illegal farmland conversion on economic growth. *Habitat Int* 49:294–302
- Ciaian P, Kancs D, Swinnen J (2013) The impact of decoupled payments on land prices in the EU. In: Swinnen J, Knops L (eds) *Land, labour cap. Mark. Eur. Agric. Divers. Under A Common Policy* (Centre For European Policy Studies (CEPS), Brussels), 28–42
- Douglass M (1998) A regional network strategy for reciprocal rural-urban linkages: an agenda for policy research with reference to Indonesia. *Third World Plann Rev* 20(1):1

- Ettema D, Jong K de, Timmermans H, Bakema A (2012) Puma: multi-agent modelling of urban systems. *Model. Land-use Chang.* Springer Netherlands, Dordrecht, 237–258
- Fajar J (2014) Sia-Siakan Keanekaragaman Sumber Pangan, Indonesia Terjebak Kebijakan Pangan Monokultur Beras. <https://www.mongabay.co.id/2014/10/24/sia-siakan-keanekaragaman-sumber-pangan-indonesia-terjebak-kebijakan-pangan-monokultur-beras/>. Retrieved Jan 5 2019
- FAO (2011) The state of the world's land and water resources for food and agriculture - managing system at risk (Rome, Italy). <http://www.fao.org/3/i1688e/i1688e.pdf>. Retrieved Jan 5, 2019
- Feichtinger P, Salhofer K (2013) What do we know about the influence of agricultural support on agricultural land prices? In: Swinnen J, Knops L (eds) *Ger J Agric Econ (Centre For European Policy Studies (CEPS), Brussels)*, 71–85
- Firman T (1999) From 'global city' to 'city of crisis': Jakarta metropolitan region under economic turmoil. *Habitat Int* 23(4):447–466
- Firman T (2000) Rural to urban land conversion in Indonesia during boom and bust periods. *Land Use Policy* 17(1):13–20
- Firman T, Dharmapatri IAI (1994) The challenges to sustainable development in Jakarta metropolitan region. *Habitat Int* 18(3):79–94
- Government of Indonesia (2009) *Perlindungan Lahan Pertanian Berkelanjutan (Government of Indonesia, Indonesia)*
- Hafsah MJ, Sudaryanto T (2004) Sejarah Intensifikasi Padi dan Prospek Pengembangannya. In: Kasryono F, Pasandaran E, Fagi AM (eds) *Ekon. Padi dan Beras di Indones.* (Badan Penelitian dan Pengembangan Pertanian, Bogor), 17–29
- Hariyanto B (2017) *Pangan Lokal*. <http://adelyadesi.lecture.ub.ac.id/files/2017/05/Pangan-Lokal-di-Gizi-Unibraw.pdf>
- Hudalah D, Firman T (2012) Beyond property: industrial estates and post-suburban transformation in Jakarta Metropolitan Region. *Cities* 29(1):40–48
- Imhoff ML, Lawrence WT, Stutzer DC, Elvidge CD (1997) A technique for using composite DMSP/OLS "city lights" satellite data to map urban area. *Remote Sens Environ* 61(3):361–370
- Irawan B (2011) *Konversi Lahan Sawah di Jawa Barat: Kecenderungan dan Pengaruhnya terhadap Produksi Padi Sawah*. Kasryno, FaisalPasaribu SM, Saliem HP, Soeparno H, Pasandaran E, eds. *Konversi dan Fragm. Lahan Ancaman Terhadap Kemandirian Pangan*. (IPB Press, Bogor), 125–148
- Irwin EG, Bockstael NE (2002) Interacting agents, spatial externalities and the evolution of residential land use patterns. *J Econ Geogr* 2(1):31–54
- Irwin EG, Bockstael NE (2007) The evolution of urban sprawl: evidence of spatial heterogeneity and increasing land fragmentation. *Proc Natl Acad Sci* 104(52):33–46
- Ives CD, Kendal D (2013) Values and attitudes of the urban public towards peri-urban agricultural land. *Land Use Policy* 34:80–90
- Joshi J, Ali M, Berrens RP (2017) Valuing farm access to irrigation in Nepal: a hedonic pricing model. *Agric Water Manag* 181:35–46
- Kilian S, Antón J, Salhofer K, Röder N (2012) Impacts of 2003 CAP reform on land rental prices and capitalization. *Land Use Policy* 29(4):789–797
- Kontgis C, Schneider A, Fox J, Saksena S, Spencer JH, Castrence M (2014) Monitoring peri-urbanization in the greater Ho Chi Minh City metropolitan area. *Appl Geogr* 53:377–388
- Latruffe L, Le Mouél C (2009) Capitalization of government support in agricultural land prices: what do we know? *J Econ Surv* 23(4):659–691
- Liu Y, Fang F, Li Y (2014) Key issues of land use in China and implications for policy making. *Land Use Policy* 40:6–12
- Maddison DJ (2009) A spatio-temporal model of farmland values. *J Agric Econ* 60(1):171–189
- Magsi H, Torre A, Liu Y, Javed Sheikh M (2017) Land use conflicts in the developing countries: proximate driving forces and preventive measures. *Pak Dev Rev* 56(1):19–30
- Malaque IR, Yokohari M (2007) Urbanization process and the changing agricultural landscape pattern in the urban fringe of Metro Manila, Philippines. *Environ Urban* 19(1):191–206

- McGee TG (2010) Building liveable cities in Asia in the twenty-first century research and policy challenges for the urban future of Asia. *Malays J Environ Manag* 11(1):14–28
- Nafziger EW (2012) Economic development. Cambridge University Press, Cambridge, 838 p
- Nawiyanto N (2017) The politics of food and food security during Indonesia's old order (1945–1965). *Lembaran Sej* 10(1):65–73
- North DC (1955) Location theory and regional economic growth. *J Polit Econ* 63(3):243–258
- Nusantoro A, Cramb RA (1990) Land-use targets in Javanese agriculture: an institutional analysis. In: 34th annual conference of the Australian agricultural economics society, University of Queensland, Brisbane, 1–23
- OECD/FAO (2013) OECD-FAO agricultural outlook 2012–2021. OECD Publishing. [http://dx.doi.org/10.1788/agr\\_outlook-2013-en](http://dx.doi.org/10.1788/agr_outlook-2013-en)
- Omrani H, Abdallah F, Charif O, Longford NT (2015) Multi-label class assignment in land-use modelling. *Int J Geogr Inf Sci* 29(6):1023–1041
- Pasandaran E, Syam M, Las I (2006) Degradasi sumber daya alam: ancaman bagi kemandirian pangan nasional. In: Kasryno, FaisalPasaribu SM, Saliem HP, Soeparno H, Pasandaran E (eds) *Konversi dan Fragma Lahan Ancaman Terhadap Kemandirian Pangan*. IPB Press, Bogor, 35–53
- Peerzado MB, Magsi H, Sheikh MJ (2018) Land use conflicts and urban sprawl: conversion of agriculture lands into urbanization in Hyderabad, Pakistan. *J Saudi Soc Agric Sci*
- Phuc NQ, Van Westen ACM, Zoomers A (2014) Agricultural land for urban development: the process of land conversion in Central Vietnam. *Habitat Int* 41:1–7
- Plieninger T, Draux H, Fagerholm N, Bieling C, Bürgi M, Kizos T, Kuemmerle T, Primdahl J, Verburg PH (2016) The driving forces of landscape change in Europe: a systematic review of the evidence. *Land Use Policy* 57:204–214
- Pribadi DO, Pauleit S (2016) Peri-urban agriculture in Jabodetabek Metropolitan Area and its relationship with the urban socioeconomic system. *Land Use Policy* 55:265–274
- Rondhi M, Pratiwi PA, Handini VT, Sunartomo AF, Budiman SA (2018) Agricultural land conversion, land economic value, and sustainable agriculture: a case study in East Java, Indonesia. *Land* 7(4)
- Schulp CJE, Levers C, Kuemmerle T, Tieskens KF, Verburg PH (2019) Mapping and modelling past and future land use change in Europe's cultural landscapes. *Land Use Policy* 80 (April):332–344
- Soen SK (1968) Prospects for agricultural development in Indonesia. Centre for Agricultural Publications and Documentation, Wageningen
- Su S, Ma X, Xiao R (2014) Agricultural landscape pattern changes in response to urbanization at ecoregional scale. *Ecol Indic* 40:10–18
- Sumarno (2004) *Kemandirian Pangan Nasional Mengapa Sulit Dicapai dan Apa Yang Harus Dilakukan. Memperkuat Kemamp. Swasembada Pangan*. IAARD Press, Bogor, 283–310
- Tassinari P, Torreggiani D, Benni S (2013) Dealing with agriculture, environment and landscape in spatial planning: a discussion about the Italian case study. *Land Use Policy* 30(1):739–747
- van Vliet J, de Groot HLF, Rietveld P, Verburg PH (2015) Manifestations and underlying drivers of agricultural land use change in Europe. *Landsc Urban Plan* 133:24–36
- Wang Y, Scott S (2008) Illegal farmland conversion in China's urban periphery: local regime and national transitions. *Urban Geogr* 29(4):327–347
- Wasilewski A, Krukowski K (2004) Land conversion for suburban housing: a study of urbanization around Warsaw and Olsztyn, Poland. *Environ Manage* 34(2):291–303
- Yagi H, Garrod G (2018) The future of agriculture in the shrinking suburbs: the impact of real estate income and housing costs. *Land Use Policy* 76(March):812–822
- Yokohari M, Takeuchi K, Watanabe T, Yokota S (2000) Beyond greenbelts and zoning—a new planning concept for the environment of Asian mega-cities. *Landsc Urban Plan* 47:159–171

- Zasada I (2011) Multifunctional peri-urban agriculture—a review of societal demands and the provision of goods and services by farming. *Land Use Policy* 28(4):639–648
- Zeza A, Tasciotti L (2010) Urban agriculture, poverty, and food security: empirical evidence from a sample of developing countries. *Food Policy* 35(4):265–273
- Zhong T, Huang X, Ye L, Scott S (2014) The impacts on illegal farmland conversion of adopting remote sensing technology for land inspection in China. *Sustainability* 6(7):4426–4451

